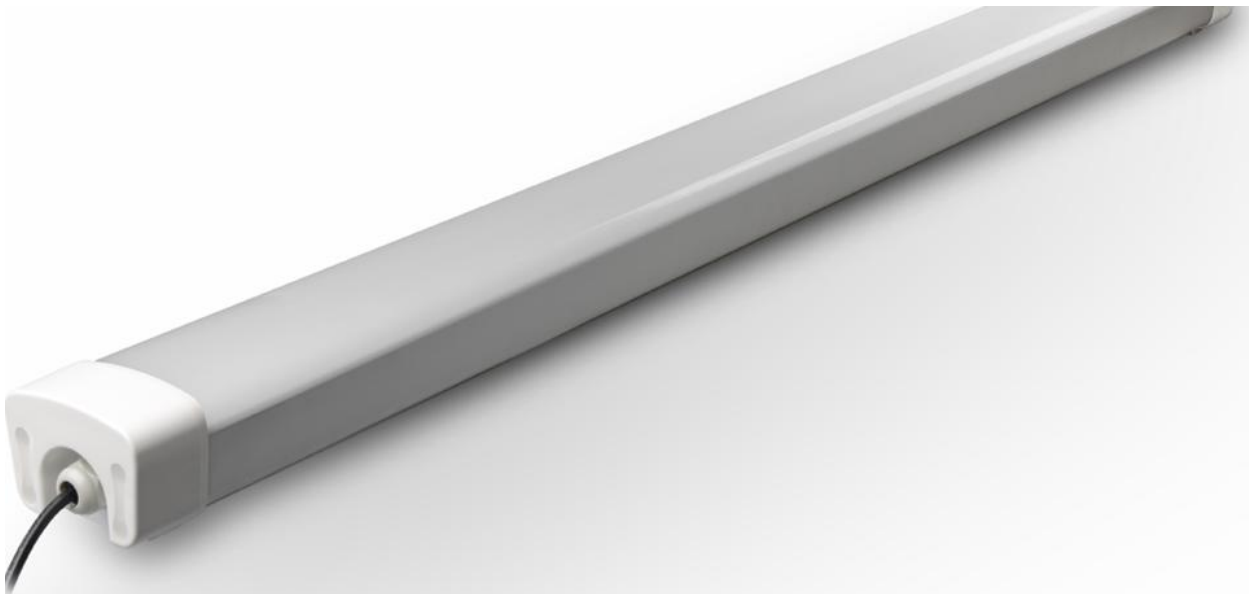
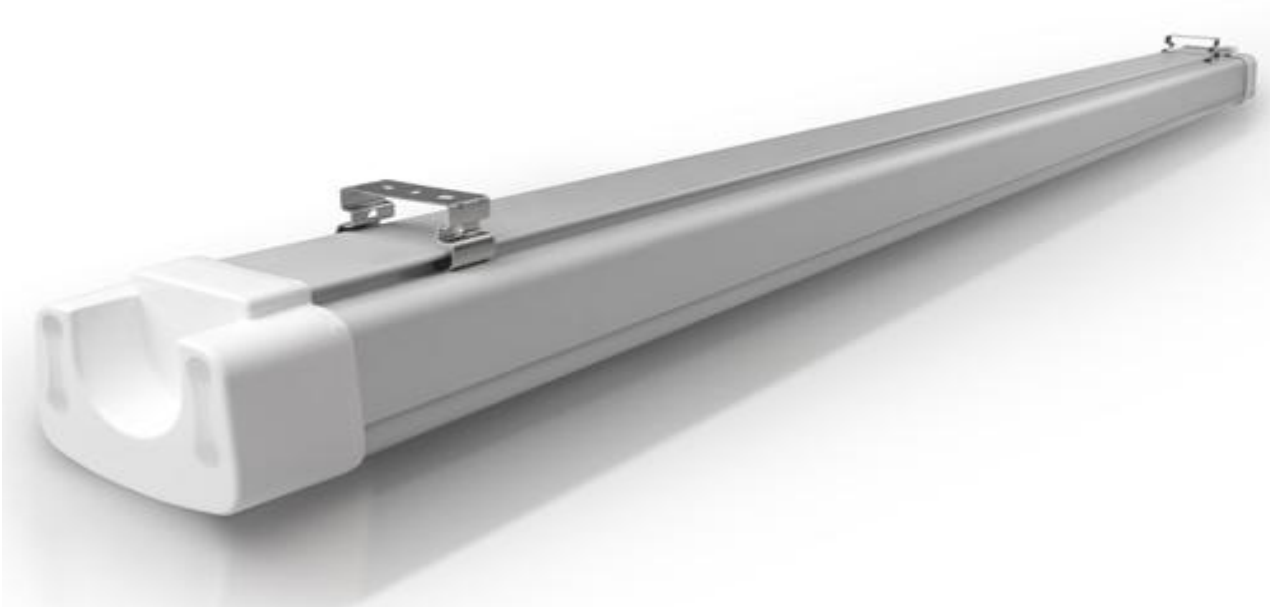


ЛИНЕЙНЫЕ ВЛАГОЗАЩИЩЕННЫЕ СВЕТИЛЬНИКИ IP65

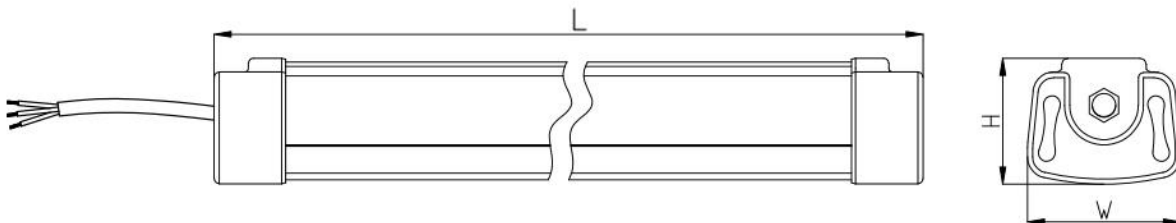


IP65 waterproof+dustproof+Moistureproof+anticorrosive. LED Tri-proof Lights are designed to be used in extreme environment, indoor humid places, outdoor wet and dust places. Wide input voltage AC 100~245V/ 50~60Hz for this LED Tri-proof Light, applicable for most countries.





Electrical and Technical Data



Product No.	Dimension L*W*H (mm)	Power (W)	Input Voltage (V)	PF	LED Quantity	CCT	Luminous (lm)	CRI (Ra)	IP Rating	Beam Ang
PF 001-600-20W	600*89*74	20W	AC110-240V	>0.9	144pcs SMD2835	2700-6500K	1700-2000lm	>80	IP65	120°
PF 001-600-30W	600*89*74	30W	AC110-240V	>0.9	192pcs SMD2835	2700-6500K	2500-3000lm	>80	IP65	120°
PF 001-900-40W	900*89*74	40W	AC110-240V	>0.9	288pcs SMD2835	2700-6500K	3500-4000lm	>80	IP65	120°
PF 001-1200-40W	1200*89*74	40W	AC110-240V	>0.9	288pcs SMD2835	2700-6500K	3500-4000lm	>80	IP65	120°
PF 001-1200-50W	1200*89*74	50W	AC110-240V	>0.9	288pcs SMD2835	2700-6500K	4500-5000lm	>80	IP65	120°
PF 001-1200-60W	1200*89*74	60W	AC110-240V	>0.9	336pcs SMD2835	2700-6500K	5500-6000lm	>80	IP65	120°
PF 001-1500-60W	1500*89*74	60W	AC110-240V	>0.9	432pcs SMD2835	2700-6500K	5500-6000lm	>80	IP65	120°
PF 001-1500-80W	1500*89*74	80W	AC110-240V	>0.9	432pcs SMD2835	2700-6500K	7200-8000lm	>80	IP65	120°

